

# Internet Explorer 8 and ANGEL: Issues and Recommendations

(modified from ANGEL Documents, 8/7/2009)

At this time, Internet Explorer 8 is **not supported** for use with ANGEL. ANGEL Learning, the company that makes ANGEL, has committed to fixing issues with ANGEL and Internet Explorer 8 in a future update. Until these issues are resolved, we recommend continuing to use Internet Explorer 7. If you have already upgraded to Internet Explorer 8, we recommend that you either use Firefox 3 for ANGEL or configure Internet Explorer to display ANGEL in compatibility mode. The recommended configuration section below details the changes the ANGEL support team recommends for the best ANGEL experience. If you have any questions or concerns, please contact ANGEL support.

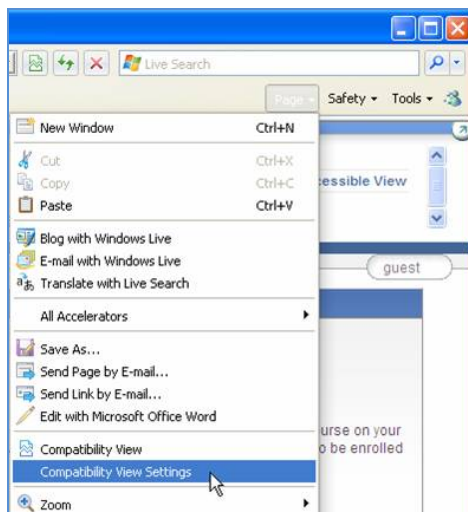
## Known Issues

- Discussion forum post titles are not shown and posts cannot be viewed when discussion forums are viewed in threaded mode.
- Posts are indented too far to the right when discussion forums are viewed in nested mode.
- When a course editor edits a quiz, the controls for adding a new question, rearranging questions, accessing quiz settings, and other functions are not accessible.
- When the HTML editor is loaded, it will be displayed twice. Only changes made in the first instance of the editor will be saved.
- Some minor display issues.

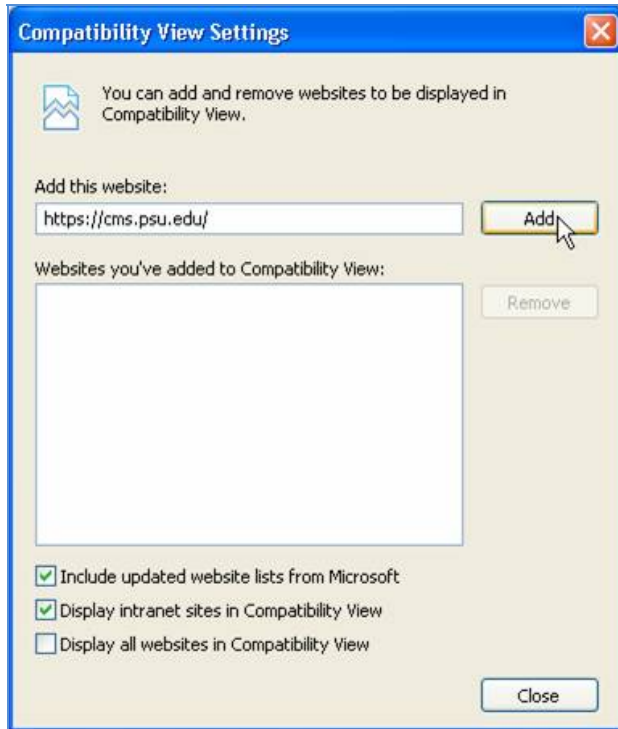
## Recommended Configuration

For best use with ANGEL, the ANGEL support team recommends using Firefox 3 or Internet Explorer 7. If you need to use Internet Explorer 8, the ANGEL support team recommends making the following changes to Internet Explorer's settings:

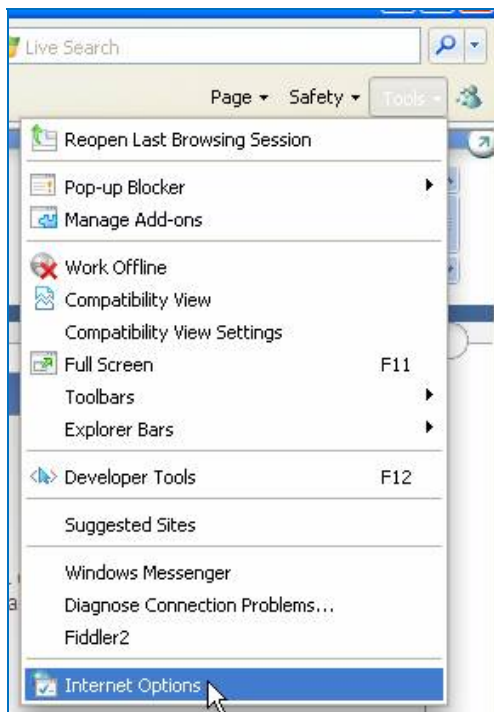
1. Within Internet Explorer 8, click **Tools** on the right side of the toolbar, then select **compatibility view settings**.



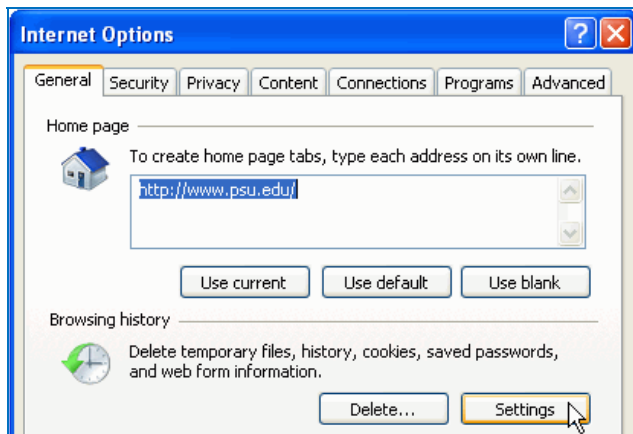
2. In the **Add this website** text box, enter <https://cms.psu.edu>, and then click the **Add** button. You should see “psu.edu” on the list. Other options in this window would not affect viewing ANGEL so it’s up to the user what to select.



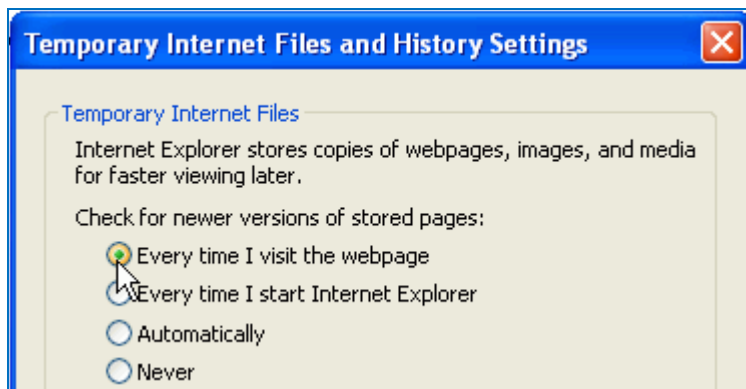
3. Click the **Close** button to close the window.
4. Within Internet Explorer 8, click **Tools** on the right side of the toolbar, and then select **Internet Options**.



5. On the **General** tab, in the **Browsing history** section, click the **Settings** button.

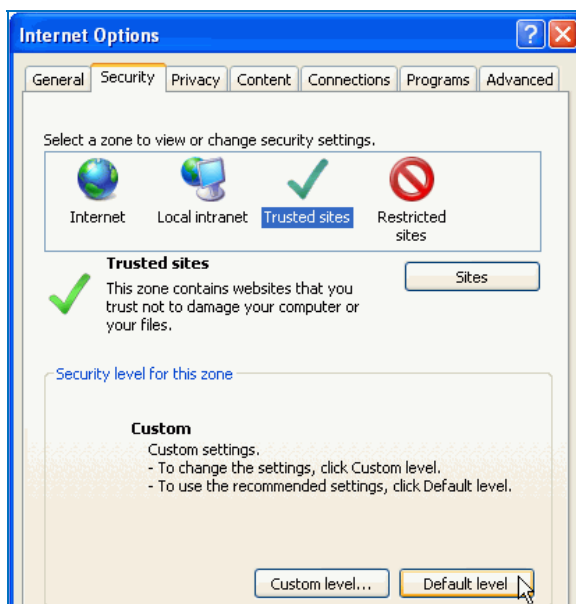


6. Select **Every time I visit the webpage**, then click **OK**.



7. Select the **Security** tab.

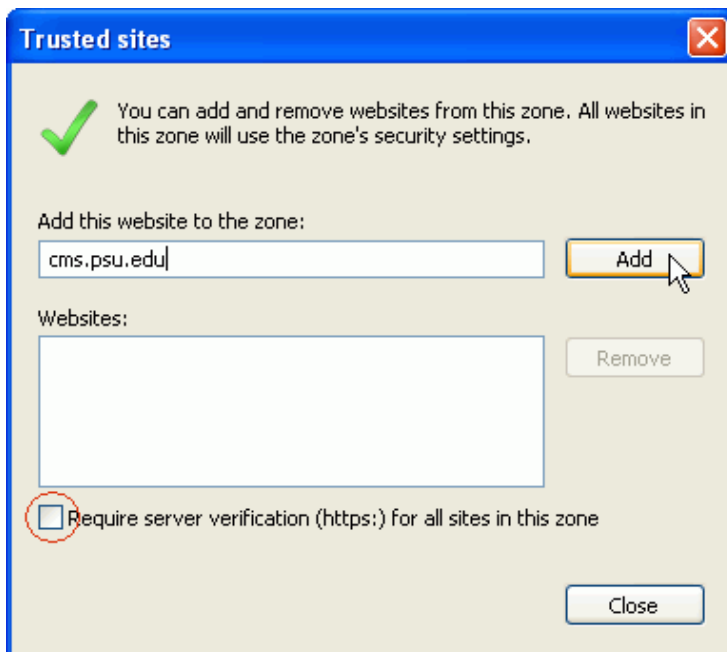
8. Click the **Trusted sites** icon to select it, and then click the **Default level** button.



9. Click the **Sites** button.



10. Uncheck **Require server verification (https:) for all sites in this zone** check box.
11. In the **Add this website to the zone** text box, enter **cms.psu.edu**, and then click the **Add** button. Click the **Close** button to close the window.



12. Click **OK** to close the **Internet Options** window.